

## RTX2300 ACCESSORIES

POWER SUPPLY UNIT ADD-ON MODULE

**DATA SHEET**

The power supply unit add-on module is an optional instrumentation module for the RTX2300 Smart ATE unit which enhances its test capabilities whilst reducing the number of separate stand-alone instruments needed in the ATE solution.

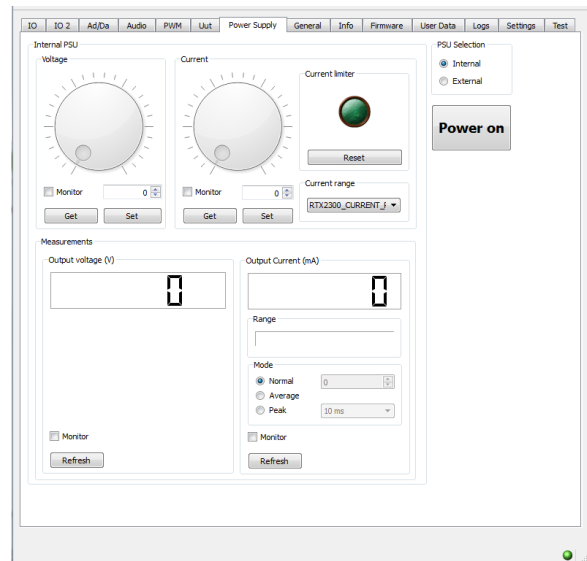
# RTX2300 POWER SUPPLY UNIT

The PSU enables the user to perform basic and accurate power measurements.

The power supply unit module is available in two different variants a standard version and a low-current version. Both versions are designed to be mounted in the instrumentation area located in the rear compartment of the RTX2300 Smart ATE.

It is an adjustable power supply for the Device Under Test (DUT). The programmable power supply range of the programmable PSU unit is from 1V to 15V towards the DUT with a maximum supply current of 2A. It is furthermore possible to adjust the current from 0 to 2A using the current limiter included in the programmable PSU module.

Through the GUI of the RTX2300 Smart ATE it is possible to adjust the power supply and current level supplied to the DUT.



Extract of the Windows User Interface

## TECHNICAL SPECIFICATIONS

DESCRIPTION	SPECIFICATIONS
CHANNELS	1
VOLTAGE RANGE	1-15 VDC
MAX RIPPLE VOLTAGE	10 mV (100 Hz pulsed max load)
VOLTAGE PROGRAMMING STEP SIZE	20 mV
SUPPLY NON-LINEARITY	1-15 V (5%)
LOAD REGULATION	10 mV
VOLTAGE MEASUREMENT RESOLUTION	1-15 V (20 mV)
CURRENT MEASUREMENT RANGE	
STANDARD VERSION	0-2 A
LOW-CURRENT VERSION	0-1 A
CURRENT MEASUREMENT RESOLUTION, MIN	
STANDARD VERSION	1 mA (0-100 mA)
LOW-CURRENT VERSION	1 uA (0-1 mA)

## ORDERING DETAILS

RTX NO.	ADD-ON MODULE	DESCRIPTION
95203194	Programmable PSU - standard version	Programmable PSU add-on module w/ min. current resolution 1 mA
95203193	Programmable PSU - low-current version	Programmable PSU add-on module w/ min. current resolution 1 uA